



# CORE24

## ONSHORE



# CONTENTS

Introduction	2
Polos	3 - 17
Business Shirts	18 - 20
Sweaters	21
Overknits	22 - 34
Outerwear	35 - 56
Bottoms	57 - 61
Headwear	62 - 65
Size Charts	66 - 67

## CUTTER & BUCK

Founded in 1989 on Seattle's working waterfront, the words "Cutter" and the "Buck" were chosen to symbolize the region we know and love, where the sea, represented by a Cutter, and the mountains, represented by a Buck, meet and live-in harmony.

We are the bigger-the-better idea people and the up-for-anything instigators. Working hard to improve the world around us, we seek new frontiers to fuel our ingenuity as pioneers. We invite you to push beyond what is, to what could be in the work you do and the life you choose.

Our iconic clothing is crafted for your active lifestyle, engineered for exceptional versatility so it will be perfect for work, work from home, travel, date night, golf, walking, boating, hiking, and entertaining. Our clothing is thoughtfully engineered with performance features like moisture wicking, stretch, UPF for sun protection, and with easy care and time saving features such as durable collars, added spandex, and blended fabrics that are comfortable and stylish. At Cutter & Buck we share your commitment to sustainability, with our commitment to sustainable products, sustainable operations, and sustainable production. When you choose Cutter & Buck clothing, you are getting the genuine spirit of the Pacific Northwest.



MEN'S CODE MCK09321 | LADIES CODE LCK08685 |

MEN'S + LADIES ADVANTAGE POLO



CATEGORY  
Polos

FABRIC  
55% Cotton  
42% Polyester  
3% Spandex

WEIGHT  
Men's - 290 grams  
Ladies - 217 grams

UPF RATING  
35+

RRP  
\$100

## FEATURES

- 3 Button Placket
  - Stretches and Retains Shape
  - Rib Knit Collar and Cuffs
  - Forward Shoulder Seams, Side Vents
  - CB Pennant Embroidery at Back Neck
  - Men's Plus Sizes available Ex Seattle. Please contact us for more information
- Matching Men's Long Sleeve Polo | MCK09322

## COLOURS

### MEN'S



Black



Cardinal Red



Elemental  
Grey



Liberty Navy



Tour Blue



White

### LADIES



Black



Cardinal Red



Elemental  
Grey



Liberty Navy



Tour Blue



White

## SIZING AND FIT

MEN'S FIT		S	M	L	XL	XXL	3XL	
CHEST (cm)		99	104	109	114	119	124	
LADIES FIT		XS	S	M	L	XL	XXL	3XL
CHEST (cm)		86	90	95	101	109	116	120

\*These measurements represent body measurement, not garment measurement



## MEN'S ADVANTAGE SPACE DYE POLO

| MEN'S CODE MCK00117 |



### FEATURES

- Space Dye Knit Jersey with soft wash finish
- Moisture wicking
- Rib knit collar and sleeve cuff
- CB Pennant embroidery at back neck
- Machine Wash
- Men's Plus Sizes available Ex Seattle. Please contact us for more information

### COLOURS

#### MEN'S



Dark Black



Dark Cardinal Red



Dark Liberty Navy



Dark Tour Blue



Elemental Grey

CATEGORY  
Polos

FABRIC  
52% Cotton  
45% Polyester  
3% Spandex

WEIGHT  
Men's - 263 grams

UPF RATING  
35+

RRP  
\$105

### SIZING AND FIT

MEN'S FIT	S	M	L	XL	XXL	3XL
CHEST (cm)	99	104	109	114	119	124



| MEN'S CODE MCK09322 |

MEN'S LONG SLEEVE ADVANTAGE POLO



CATEGORY  
Polos

FABRIC  
55% Cotton  
42% Polyester  
3% Spandex

WEIGHT  
Men's - 326 grams

UPF RATING  
35+

RRP  
\$110

## FEATURES

- 3 Button Placket
- Stretches and Retains Shape
- Rib Knit Collar and Cuffs
- Forward Shoulder Seams, Side Vents
- CB Pennant Embroidery at Back Neck
- Men's Plus Sizes available Ex Seattle. Please contact us for more information

## COLOURS

MEN'S



Black



Elemental  
Grey



Liberty Navy



White

## SIZING AND FIT

MEN'S FIT	S	M	L	XL	XXL	3XL
CHEST (cm)	99	104	109	114	119	124

\*These measurements represent body measurement, not garment measurement



MEN'S + LADIES PROSPECT POLO

| MEN'S CODE MCK01127 | LADIES CODE LCK00111 |



## FEATURES

- Jacquard Texture Knit Fabric
- Moisture Wicking
- Self Collar
- 3 Button Placket with Angle Stitch
- Side Seams and Straight Hem on Men's
- Princess Seams and Curved Hem on Ladies
- Dyed to Match Logo Buttons
- CB Pennant Embroidery at Left Sleeve Hem
- Men's Plus Sizes available Ex Seattle. Please contact us for more information
- More colours available offshore. Please contact us for more information.

## COLOURS

### MEN'S



### LADIES



## SIZING AND FIT

MEN'S FIT		S	M	L	XL	XXL	3XL	
CHEST (cm)		99	104	109	114	119	124	
LADIES FIT		XS	S	M	L	XL	XXL	3XL
CHEST (cm)		86	90	95	101	109	116	120

6 \*These measurements represent body measurement, not garment measurement

CATEGORY  
Polos

FABRIC  
92% Polyester  
8% Spandex

WEIGHT  
Men's - 165 grams  
Ladies - 165 grams

UPF RATING  
50+

RRP  
\$75



| MEN'S CODE MCK00107 | LADIES CODE LCK00071 |

MEN'S + LADIES FORGE POLO



CATEGORY  
Polos

FABRIC  
96% Polyester  
4% Spandex

WEIGHT  
Men's - 235 grams  
Ladies - 163 grams

UPF RATING  
50+

RRP  
\$105

## FEATURES

- Moisture Wicking
- Jersey Fabric with Matte Look and Natural Hand Feel
- Knit Collar
- 3 Button Placket with angle stitch on Men's
- Exposed Half Zip on Ladies
- Straight Hem on Men's, Curved Hem on Ladies
- CB Logo Buttons and CB Pennant Embroidery at Back Half Moon
- Men's Plus Sizes available Ex Seattle. Please contact us for more information

## COLOURS

### MEN'S



Atlas



Black



Cardinal Red



Liberty Navy



Tour Blue



White

### LADIES



Atlas



Black



Cardinal Red



Liberty Navy



Tour Blue



White

## SIZING AND FIT

MEN'S FIT		S	M	L	XL	XXL	3XL	
CHEST (cm)		99	104	109	114	119	124	
LADIES FIT		XS	S	M	L	XL	XXL	3XL
CHEST (cm)		86	90	95	101	109	116	120

\*These measurements represent body measurement, not garment measurement



## LADIES DAYBREAK POLO

| LADIES CODE LCK00166 |



### FEATURES

- Collared V Neck
- Cap Sleeve
- Moisture Wicking
- Interlock with Matte Appearance
- Material made from 9 recycled plastic bottles
- Global Recycled Standard
- More colours available offshore. Please contact us for more information.

### COLOURS

#### LADIES



Atlas



Black



Gelato



Navy Blue



White

CATEGORY  
Polos

FABRIC  
88% Recycled Polyester  
12% Spandex

WEIGHT  
Ladies - 145 grams

UPF RATING  
50+

RRP  
\$70

### SIZING AND FIT

LADIES FIT	XS	S	M	L	XL	XXL	3XL
CHEST (cm)	86	90	95	101	109	116	120





MEN'S CODE MCK01144 | LADIES CODE LCK00127 | **MEN'S AND LADIES VIRTUE ECO PIQUE POLO**



CATEGORY  
Polos

FABRIC  
95% Recycled Polyester  
5% Spandex Pique

WEIGHT  
Men's - 254 grams  
Ladies - 190 grams

UPF RATING  
25+

**RRP**  
**\$70**

## FEATURES

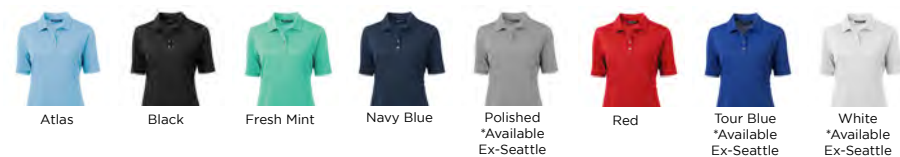
- Moisture-wicking
- Self-fabric collar
- Contains an average of 15 recycled plastic bottles
- CB logo trims
- Ultra Lightweight with 4 way stretch
- Recycled content certified by Global Recycled Standard
- Men's Plus Sizes available Ex Seattle. Please contact us for more information
- More colours available offshore. Please contact us for more information.

## COLOURS

### MEN'S



### LADIES



## SIZING AND FIT

MEN'S FIT		S	M	L	XL	XXL	3XL	
CHEST (cm)		99	104	109	114	119	124	
LADIES FIT		XS	S	M	L	XL	XXL	3XL
CHEST (cm)		86	90	95	101	109	116	120

\*These measurements represent body measurement, not garment measurement



MEN'S AND LADIES VIRTUE ECO PIQUE STRIPE POLO | MEN'S CODE MCK01168 | LADIES CODE LCK00157 |



## FEATURES

- Moisture-wicking
- Self-fabric collar
- Contains an average of 15 recycled plastic bottles
- CB logo trims
- Ultra Lightweight with 4 way stretch
- Recycled content certified by Global Recycled Standard

Ladies Available Ex-Seattle Only - Please allow 3 weeks for delivery to our warehouse  
Men's Plus Sizes available Ex-Seattle. Please contact us for more information

More Colours available Ex-Seattle. Please contact us for more information

## COLOURS

### MEN'S



Tour Blue  
\*Available  
Ex-Seattle

### LADIES



## SIZING AND FIT

MEN'S FIT		S	M	L	XL	XXL	3XL	
CHEST (cm)		99	104	109	114	119	124	
LADIES FIT		XS	S	M	L	XL	XXL	3XL
CHEST (cm)		86	90	95	101	109	116	120

CATEGORY  
Polos

FABRIC  
95% Recycled Polyester  
5% Spandex Pique

WEIGHT  
Men's - 244 grams  
Ladies - 190 grams

UPF RATING  
25+

RRP  
\$90





| MEN'S CODE MCK00007 |

MEN'S VIRTUE ECO PIQUE MICRO STRIPE POLO



CATEGORY  
Polos

FABRIC  
95% Recycled Polyester  
5% Spandex Micro Stripe Pique

WEIGHT  
Men's - 254 grams

UPF RATING  
25+

RRP  
\$100

#### FEATURES

- Material made from an average of 16 recycled plastic bottles
- Solid color self-fabric collar
- Moisture Wicking
- CB logo trims
- Recycled content certified by Global Recycled Standard
- Machine Wash

Available Ex-Seattle Only - Please allow 3 weeks for delivery to our warehouse.  
Men's Plus Sizes available Ex-Seattle. Please contact us for more information.  
More colours available Ex-Seattle. Please contact us for more information

#### COLOURS

##### MENS



Atlas /  
Navy Blue



Fresh Mint /  
Navy Blue



Gelato /  
Navy Blue



Navy Blue /  
White



Red /  
Navy Blue

#### SIZING AND FIT

MEN'S FIT	S	M	L	XL	XXL	3XL
CHEST (cm)	99	104	109	114	119	124

\*These measurements represent body measurement, not garment measurement





## MEN'S VIRTUE ECO PIQUE BOTANICAL PRINT POLO

MEN'S CODE MCK01161



### FEATURES

- Moisture-wicking
- Self-fabric collar
- Contains an average of 15 recycled plastic bottles
- CB logo trims
- Ultra Lightweight with 4 way stretch
- Recycled content certified by Global Recycled Standard
- Men's Plus Sizes available Ex-Seattle. Please contact us for more information

### COLOURS

#### MEN'S



Atlas



Fresh Mint



Navy Blue



Red

CATEGORY  
Polos

FABRIC  
95% Recycled Polyester  
5% Spandex Pique

WEIGHT  
Men's - 244 grams

UPF RATING  
25+

RRP  
\$90

### SIZING AND FIT

MEN'S FIT	S	M	L	XL	XXL	3XL
CHEST (cm)	99	104	109	114	119	124





| MEN'S CODE MCK01170 |

MEN'S VIRTUE ECO PIQUE TILE PRINT POLO



CATEGORY  
Polos

FABRIC  
95% Recycled Polyester  
5% Spandex Pique

WEIGHT  
Men's - 244 grams

UPF RATING  
25+

RRP  
\$90

## FEATURES

- Moisture-wicking
- Self-fabric collar
- Contains an average of 15 recycled plastic bottles
- CB logo trims
- Ultra Lightweight with 4 way stretch
- Recycled content certified by Global Recycled Standard
- Men's Plus Sizes available Ex Seattle. Please contact us for more information

## COLOURS

MEN'S



Atlas



Black



Chelan



Navy Blue



White

## SIZING AND FIT

MEN'S FIT	S	M	L	XL	XXL	3XL
CHEST (cm)	99	104	109	114	119	124

\*These measurements represent body measurement, not garment measurement



MEN'S + LADIES CHARGE ACTIVE POLO

| MEN'S CODE MQK00096 | LADIES CODE LQK00079 |



## FEATURES

- Lightweight Heathered Fabric
- Moisture Wicking
- Active Short Sleeve Polo
- Tearaway Tags
- 3 Button Placket
- Side Vents at Bottom Hem

## COLOURS

### MEN'S



Black  
Heather



Blue  
Heather



Cardinal  
Red



College  
Purple  
Heather



Light Grey  
Heather



Navy  
Heather

### LADIES



Black  
Heather



Blue  
Heather



Cardinal  
Red



College  
Purple  
Heather



Light Grey  
Heather



Navy  
Heather

## SIZING AND FIT

### MEN'S FIT

CHEST (cm)

S M L XL XXL 3XL

99 104 109 114 119 124

### LADIES FIT

CHEST (cm)

XS S M L XL XXL 3XL

86 90 95 101 109 116 120

CATEGORY  
Polos

FABRIC  
100% Polyester

WEIGHT  
Men's - 190 grams  
Ladies - 145 grams

UPF RATING  
N/A

RRP  
\$50





| MEN'S CODE MQK00075 | LADIES CODE LQK00063 |

MEN'S + LADIES SPIN DYE PIQUE POLO



CATEGORY  
Polos

FABRIC  
100% Polyester

WEIGHT  
Men's - 222 grams  
Ladies - 159 grams

UPF RATING  
50+

RRP  
\$50

## FEATURES

- Moisture Wicking
- Long Lasting Colour that never fades
- 3 Button Placket
- Ribbed Knit Collar and Sleeve
- Forward Shoulders and Open Sleeves
- Eco Friendly Production
- More colours available offshore. Please contact us for more information.

## COLOURS

### MEN'S



Black



Dark Navy



Pistol



Red



Tour Blue



White

### LADIES



Black



Dark Navy



Pistol



Red



Tour Blue



White

## SIZING AND FIT

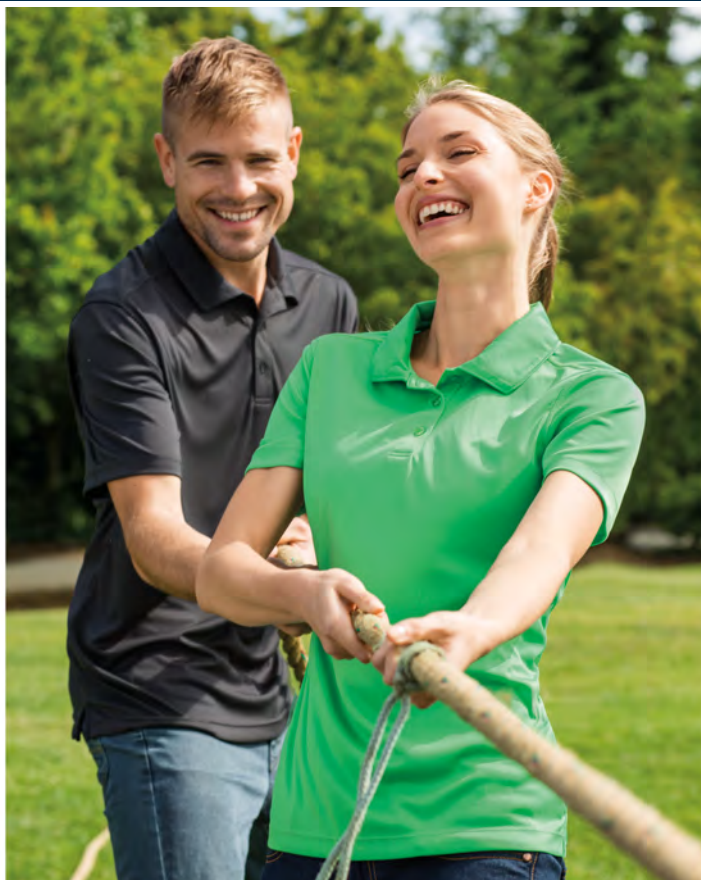
MEN'S FIT		S	M	L	XL	XXL	3XL	
CHEST (cm)		99	104	109	114	119	124	
LADIES FIT		XS	S	M	L	XL	XXL	3XL
CHEST (cm)		86	90	95	101	109	116	120

\*These measurements represent body measurement, not garment measurement



MEN'S + LADIES PARMA POLO

| MEN'S CODE MQK00045 | LADIES CODE LQK00036 |



## FEATURES

- Moisture Wicking
  - Forward Shoulders
  - Self Fabric Collar
  - Open Sleeves
  - 3 Button Placket
  - Machine Wash
  - More colours available offshore. Please contact us for more information.
- Available Ex-Seattle Only - Please allow 3 weeks for delivery to our warehouse.

## COLOURS

### MEN'S



Apple Green



Black



Light Blue



Navy



Red



Titan



White

### LADIES



Apple Green



Black



Light Blue



Navy



Red



Titan



White

## SIZING AND FIT

MEN'S FIT		S	M	L	XL	XXL	3XL	
CHEST (cm)		99	104	109	114	119	124	
LADIES FIT		XS	S	M	L	XL	XXL	3XL
CHEST (cm)		86	90	95	101	109	116	120

CATEGORY  
Polos

FABRIC  
100% Polyester Interlock

WEIGHT  
Men's - 125 grams  
Ladies - 125 grams

UPF RATING  
50+ UPF

RRP  
\$55



MEN'S CODE MQK00050 | LADIES CODE LQK00041 |

MEN'S + LADIES PARMA COLOURBLOCK POLO



CATEGORY  
Polos

FABRIC  
100% Polyester

WEIGHT  
Men's - 208 grams  
Ladies - 154 grams

UPF RATING  
N/A

RRP  
\$55

## FEATURES

- Moisture Wicking Airy Fabric
- Forward Shoulders
- Open Sleeves
- Colourblock Self-Collar
- Three Button Placket on Men's
- Five Button Placket on Ladies

Available Ex-Seattle Only - Please allow 3 weeks for delivery to our warehouse.

## COLOURS

### MEN'S



Navy/Titan



Red/Titan



Titan/Black



White/Navy



White/Red



White/Titan

### LADIES



Navy/White



Red/White



Titan/White



White/Navy



White/Red



White/Titan

## SIZING AND FIT

MEN'S FIT  
CHEST (cm)

S	M	L	XL	XXL	3XL
99	104	109	114	119	124

LADIES FIT  
CHEST (cm)

XS	S	M	L	XL	XXL	3XL
86	90	95	101	109	116	120

\*These measurements represent body measurement, not garment measurement



MEN'S + LADIES STRETCH OXFORD

| MEN'S CODE MCW00138 | LADIES CODE LCW00003 |



## FEATURES

- Epic Easy Care Wrinkle Resistant Finish
- Button Down Front
- Button Down Collar on Men's, Collar Stand on Ladies
- Double Back Pleat on Men's
- Chest Patch Pocket
- Barrel Cuff
- CB Pennant at Left Cuff on Men's, Inside Placket on Ladies

Available Ex-Seattle Only - Please allow 3 weeks for delivery to our warehouse.

## COLOURS

### MEN'S



Charcoal



French Blue



Light Blue

### LADIES



Charcoal



French Blue



Light Blue

## SIZING AND FIT

MEN'S FIT		S	M	L	XL	XXL	3XL	
CHEST (cm)		99	104	109	114	119	124	
LADIES FIT		XS	S	M	L	XL	XXL	3XL
CHEST (cm)		86	90	95	101	109	116	120

CATEGORY  
Business Shirts

FABRIC  
64% Cotton  
34% Polyester  
2% Spandex

WEIGHT  
Men's - 344 grams  
Ladies - 272 grams

UPF RATING  
N/A

RRP  
\$165



| MEN'S CODE MCW00141 | LADIES CODE LCW00004 |

**MEN'S + LADIES STRETCH OXFORD STRIPE**



**CATEGORY**  
Business Shirts

**FABRIC**  
64% Cotton  
34% Polyester  
2% Spandex

**WEIGHT**  
Men's - 344 grams  
Ladies - 272 grams

**UPF RATING**  
N/A

**RRP**  
**\$165**

## FEATURES

- Wrinkle Resistant Finish
- Button Down Front
- Button Down Collar on Men's, Collar Stand on Ladies
- Double Back Pleat on Men's
- Chest Patch Pocket
- Barrel Cuff
- CB Pennant at Left Cuff on Men's, Inside Placket on Ladies

Available Ex-Seattle Only - Please allow 3 weeks for delivery to our warehouse.

## COLOURS

### MEN'S



Charcoal



French Blue



Light Blue

### LADIES



Charcoal



French Blue



Light Blue

## SIZING AND FIT

MEN'S FIT		S	M	L	XL	XXL	3XL	
CHEST (cm)		99	104	109	114	119	124	
LADIES FIT		XS	S	M	L	XL	XXL	3XL
CHEST (cm)		86	90	95	101	109	116	120

\*These measurements represent body measurement, not garment measurement



## MEN'S STRETCH GINGHAM

STANDARD FIT CODE

MCW00143



### FEATURES

- Epic Easy Care Wrinkle Resistant Stretch Gingham Plain Weave
  - Taped Seams
  - Button Down Collar
  - Piping at Inside Back Neck
  - Back Yolk with Double Pleats
  - Chest Patch Pocket
  - Barrel Cuff
  - CB Pennant at Left Sleeve Placket
- Available Ex-Seattle Only - Please allow 3 weeks for delivery to our warehouse.

### COLOURS

#### MEN'S



Cardinal Red



Charcoal



Liberty Navy



Tour Blue

CATEGORY  
Business Shirts

FABRIC  
64% Cotton  
33% Polyester  
3% Spandex

WEIGHT  
Men's - 281 grams

UPF RATING  
N/A

RRP  
\$165

### SIZING AND FIT

MEN'S FIT	S	M	L	XL	XXL	3XL
CHEST (cm)	99	104	109	114	119	124



MEN'S CODE MCS07726 | LADIES CODE LCS08100 |

MEN'S + LADIES LAKEMONT V-NECK



CATEGORY  
Sweaters

FABRIC  
80% Cotton  
17% Nylon

WEIGHT  
Men's - 362 grams  
Ladies - 281 grams

UPF RATING  
N/A

RRP  
\$165

## FEATURES

- V Neck Styling
- Tubular Self Trim at Neck
- 1 x 1 Double Layer at Sleeve Cuff and Hem
- 12 Gauge
- Outside Linking Seams
- Contrast Colour at Inside Cuff
- Contrast Stripe Detail at Inside Neck

Available Ex-Seattle Only - Please allow 3 weeks for delivery to our warehouse

## COLOURS

### MEN'S



Black



Charcoal  
Heather



Liberty  
Navy



Oatmeal  
Heather

### LADIES



Black



Charcoal  
Heather



Liberty  
Navy

## SIZING AND FIT

MEN'S FIT		S	M	L	XL	XXL	3XL	
CHEST (cm)		99	104	109	114	119	124	
LADIES FIT		XS	S	M	L	XL	XXL	3XL
CHEST (cm)		86	90	95	101	109	116	120

\*These measurements represent body measurement, not garment measurement



MEN'S + LADIES VIRTUE ECO PIQUE HALF ZIP

MEN'S CODE MCK01187 | LADIES CODE LCK00120 |



## FEATURES

- Moisture Wicking
  - Contains an average of 19 Recycled plastic bottles
  - CB Logo Trims
  - Recycled content certified by Global Recycled Standard
  - Contoured mock collar with zip placket on Men's
  - Zip placket with hood on Ladies
  - 3/4 Sleeves on Ladies
  - Men's Plus Sizes available Ex Seattle. Please contact us for more information
- Available Ex-Seattle Only - Please allow 3 weeks for delivery to our warehouse.

## COLOURS

### MEN'S



Black

Navy Blue

Polished

Red

Tour Blue

White

### LADIES



Black

Navy Blue

Polished

Red

Tour Blue

White

## SIZING AND FIT

MEN'S FIT		S	M	L	XL	XXL	3XL	
CHEST (cm)		99	104	109	114	119	124	
LADIES FIT		XS	S	M	L	XL	XXL	3XL
CHEST (cm)		86	90	95	101	109	116	120

22 \*These measurements represent body measurement, not garment measurement

CATEGORY  
Overknit

FABRIC  
95% Recycled Polyester  
5% Spandex Pique

WEIGHT  
Men's - 281 grams  
Ladies - 226 grams

UPF RATING  
25+

RRP  
\$110





MEN'S CODE MCK01258

MEN'S VIRTUE ECO PIQUE MICRO STRIPE HALF ZIP



CATEGORY  
Overknit

FABRIC  
95% Recycled Polyester  
5% Spandex Micro Stripe Pique

WEIGHT  
Men's - 308 grams

UPF RATING  
25+

RRP  
\$110

#### FEATURES

- Material made from an average of 20 recycled plastic bottles
- Contoured mock collar with zip placket
- Moisture Wicking
- CB logo trims
- Recycled content certified by Global Recycled Standard
- Machine Wash

Available Ex-Seattle Only - Please allow 3 weeks for delivery to our warehouse.

Men's Plus Sizes available Ex-Seattle. Please contact us for more information

More Colours available Ex-Seattle. Please contact us for more information

#### COLOURS

##### MENS



Atlas /  
Navy Blue



Black /  
Elemental Grey



Navy Blue /  
White



Red /  
Navy Blue

#### SIZING AND FIT

MEN'S FIT	S	M	L	XL	XXL	3XL
CHEST (cm)	99	104	109	114	119	124

\*These measurements represent body measurement, not garment measurement



## MEN'S + LADIES ADAPT HALF ZIP

| MEN'S CODE MCK01143 | LADIES CODE LCK00128 |



### FEATURES

- Lightweight brushed back fleece
  - Raglan sleeve
  - Contains and average of 16 recycled plastic bottles
  - Novelty contrast stitch zipper
  - CB logo trims
  - Locker loop
  - Recycled content certified by Global Recycled Standard
- More colours available Ex Seattle. Contact us for more information  
Men's Plus Sizes available Ex-Seattle. Please contact us for more information

### COLOURS

#### MEN'S



Black



Navy Blue



Polished



Red



Tour Blue



White

#### LADIES



Black



College  
Purple



Navy Blue



Polished



Red



Tour Blue



White

### SIZING AND FIT

MEN'S FIT		S	M	L	XL	XXL	3XL	
CHEST (cm)		99	104	109	114	119	124	
LADIES FIT		XS	S	M	L	XL	XXL	3XL
CHEST (cm)		86	90	95	101	109	116	120

CATEGORY  
Overknit

FABRIC  
88% Recycled Polyester  
12% Spandex Knit Jersey

WEIGHT  
Men's - 290 grams  
Ladies - 226 grams

UPF RATING  
N/A

RRP  
\$120





| MEN'S CODE MCK01086 | LADIES CODE LCK00151 |

MEN'S + LADIES ADAPT HEATHER



CATEGORY  
Overknit

FABRIC  
90% Recycled Polyester  
10% Spandex Heather Knit Jersey

WEIGHT  
Men's - 326 grams  
Ladies - 326 grams

UPF RATING  
N/A

RRP  
\$125

## FEATURES

- Ladies Full Zip, Men's Half Zip
  - Raglan sleeve
  - Material made from an average of 15 recycled plastic bottles
  - Novelty contrast stitch zipper
  - CB logo trims
  - Locker loop
  - Front welt zip pockets on Ladies
  - Recycled content certified by Global Recycled Standard
- Men's Available Ex Seattle Only - Please allow 3 weeks for delivery to our warehouse  
Men's Plus Sizes available Ex-Seattle. Please contact us for more information  
More Colours available Ex-Seattle. Please contact us for more information

## COLOURS

### MEN'S



Atlas Heather



Black Heather



Cardinal Red Heather



Navy Blue Heather



Polished Heather

### LADIES



Atlas Heather



College Purple Heather



Gelato Heather



Navy Blue Heather



Polished Heather

## SIZING AND FIT

### MEN'S FIT

CHEST (cm)

S	M	L	XL	XXL	3XL
99	104	109	114	119	124

### LADIES FIT

CHEST (cm)

XS	S	M	L	XL	XXL	3XL
86	90	95	101	109	116	120

\*These measurements represent body measurement, not garment measurement



## MEN'S + LADIES ADAPT FULL ZIP JACKET

| MEN'S CODE MCC00032 | LADIES CODE LCC00008 |

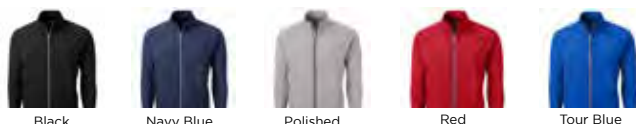


### FEATURES

- Shell overlay at front & back and on Ladies Hood
  - Novelty contrast stitch zipper
  - Contains an average of 19 recycled plastic bottles
  - Front welt zip pockets
  - Locker Loop
  - CB logo trims
  - Recycled content certified by Global Recycled Standard
- Tour Blue in Ladies is only available Ex Seattle. Please allow 3 weeks for delivery to our warehouse
- Men's Plus Sizes available Ex-Seattle. Please contact us for more information

### COLOURS

#### MEN'S



Black

Navy Blue

Polished

Red

Tour Blue

#### LADIES



Black

Navy Blue

Polished

Red

Tour Blue  
\*Ex Seattle

### SIZING AND FIT

MEN'S FIT		S	M	L	XL	XXL	3XL	
CHEST (cm)		99	104	109	114	119	124	
LADIES FIT		XS	S	M	L	XL	XXL	3XL
CHEST (cm)		86	90	95	101	109	116	120

#### CATEGORY

Overknit/Outerwear

#### FABRIC

Body: 88% Recycled Polyester, 12% Spandex Knit Jersey  
Shell: 100% Recycled Polyester Woven Fabric

#### WEIGHT

Men's - 408 grams  
Ladies - 344 grams

#### UPF RATING

N/A

**RRP**

**\$130**





| HALF ZIP CODE LCK00115 | FULL ZIP CODE LCK00168 |

LADIES DAYBREAK HOODIE



CATEGORY  
Overknit/Outerwear

FABRIC  
88% Recycled Polyester  
12% Spandex Interlock with matte appearance

WEIGHT  
Half Zip - 226 grams  
Full Zip - 272 grams

UPF RATING  
50+

RRP  
Half Zip: \$115  
Full Zip: \$120

## FEATURES

- Zip Placket with Hood
- Thumbholes
- Moisture Wicking
- On Seam pockets on full zip.
- Shaped Hem
- Material made from 14 recycled plastic bottles
- Global Recycled Standard
- More colours available offshore. Please contact us for more information.

## COLOURS

### HALF ZIP



Black



Gelato



Navy Blue



White

### FULL ZIP



Black



Navy Blue

## SIZING AND FIT

LADIES FIT	XS	S	M	L	XL	XXL	3XL
CHEST (cm)	86	90	95	101	109	116	120

\*These measurements represent body measurement, not garment measurement



## STOCKHOLM CREWNECK SWEATSHIRT

CODE MQK00106



### FEATURES

- Unisex Crewneck Sweatshirt
- Prewashed fabric is soft and stabilized for easy wash and wear
- Rib at sleeve cuff and hem provide great stretch retention
- Twill Neck Tape
- Tearaway label

### COLOURS



Anthracite  
Melange



Black



Bright  
Pink



Burgundy



Dark Navy



Grey  
Melange



Red



Royal



White

### SIZING AND FIT

MEN'S FIT	S	M	L	XL	XXL	3XL
CHEST (cm)	99	104	109	114	119	124

CATEGORY  
Overknit

FABRIC  
65% Polyester  
35% Cotton

WEIGHT  
190 grams

UPF RATING  
N/A

RRP  
\$65



CODE MQK00107

STOCKHOLM PULLOVER HOODIE



CATEGORY  
Overknit

FABRIC  
65% Polyester  
35% Cotton

WEIGHT  
520 grams

UPF RATING  
N/A

RRP  
\$65

## FEATURES

- Unisex Hooded Pullover Sweatshirt
- Prewashed Fabric is Soft and Stabilized for Easy Wash and Wear
- Rib at Sleeve Cuff and Hem
- Flat Lace Drawstring with Hood with Metal Grommets
- Front Pocket with Elastic Phone Strap and Inside Grommet for Headphone Cord
- Twill Neck Tape
- Tearaway Label for Increased Comfort

## COLOURS



Anthracite  
Melange



Black



Bright  
Pink



Burgundy



Dark Navy



Dark Olive



Grey  
Melange



Light  
Beige



Red



Royal



Tan



White

## SIZING AND FIT

MEN'S FIT	S	M	L	XL	XXL	3XL
CHEST (cm)	99	104	109	114	119	124

\*These measurements represent body measurement, not garment measurement



## MEN'S ROAM ECO HALF ZIP HOODIE

| MEN'S CODE MCK01279 |



### FEATURES

- DWR water resistant finish keeps you protected in misty conditions
- Material made from an average of 23 recycled plastic bottles
- Buttery soft materials is perfect for seasonless layering
- Features hood with drawcord and longer half zip for on-the-go comfort
- Stretch rib piercing provides additional range of motion
- Secure Zip Pockets
- CB logo trims and locker loop
- Recycled content certified by Global Recycled Standard
- Machine wash

Available Ex-Seattle Only - Please allow 3 weeks for delivery to our warehouse

### COLOURS

#### MEN'S



Black



Elemental Grey



Navy Blue

### SIZING AND FIT

MEN'S FIT	S	M	L	XL	XXL	3XL
CHEST (cm)	99	104	109	114	119	124

CATEGORY  
Overknit

FABRIC  
66% Recycled Polyester  
4% Polyester  
26% Rayon  
4% Spandex Double Knit Interlock

WEIGHT  
Men's - 698 grams

UPF RATING  
N/A

RRP  
\$115





MEN'S CODE MCK01281 | LADIES CODE LCK00162 |

MEN'S + LADIES ROAM ECO FULL ZIP JACKET



CATEGORY  
Overknit

FABRIC  
66% Recycled Polyester  
4% Polyester  
26% Rayon  
4% Spandex Double Knit Interlock

WEIGHT  
Men's - 635 grams  
Ladies - 605 grams

UPF RATING  
N/A

RRP  
\$135

## FEATURES

- DWR water resistant finish keeps you protected in misty conditions
- Material made from an average of 23 recycled plastic bottles
- Buttery soft material is perfect for seasonless layering
- Stretch rib piecing provides additional range of motion
- Secure Zip Pockets
- Recycled content certified by Global Recycled Standard
- CB logo trims and locker loop
- Machine wash

Available Ex-Seattle Only - Please allow 3 weeks for delivery to our warehouse

## COLOURS

### MEN'S



Black



Elemental Grey



Navy Blue

### LADIES



Black



Elemental Grey



Navy Blue

## SIZING AND FIT

MEN'S FIT		S	M	L	XL	XXL	3XL	
CHEST (cm)		99	104	109	114	119	124	
LADIES FIT		XS	S	M	L	XL	XXL	3XL
CHEST (cm)		86	90	95	101	109	116	120

\*These measurements represent body measurement, not garment measurement



MEN'S + LADIES CASCADE ECO SHERPA VEST

MEN'S CODE MCO00084

LADIES CODE LCO00071



## FEATURES

- Woven overlay at collar & shoulders
  - Sporty Vislon zipper with ergonomic puller
  - Secure zip front & chest pockets
  - Locker Loop
  - CB logo trims
  - Recycled content certified by Global Recycled Standard
  - Uses an average of 20 post-consumer Recycled Plastics Bottles
  - Machine Wash
- Available Ex Seattle Order - Please allow 3 weeks for delivery to our warehouse

## COLOURS

### MEN'S



### LADIES



## SIZING AND FIT

MEN'S FIT		S	M	L	XL	XXL	3XL	
CHEST (cm)		99	104	109	114	119	124	
LADIES FIT		XS	S	M	L	XL	XXL	3XL
CHEST (cm)		86	90	95	101	109	116	120

CATEGORY  
Outerwear

FABRIC  
Body Fabric: 71% Recycled Polyester,  
29% Polyester Sherpa Fleece  
Trim Fabric: 100% Recycled Polyester Woven

WEIGHT  
Men's - 353 grams  
Ladies - 272 grams

UPF RATING  
N/A

RRP  
\$140





| MEN'S CODE MCO00071 | LADIES CODE LCO00056 | **MEN'S + LADIES CASCADE ECO SHERPA HALF ZIP**



CATEGORY  
Overknit

FABRIC  
Body Fabric: 71% Recycled Polyester,  
29% Polyester Sherpa Fleece  
Trim Fabric: 100% Recycled Polyester Woven

WEIGHT  
Men's - 462 grams  
Ladies - 408 grams

UPF RATING  
N/A

**RRP**  
**\$155**

## FEATURES

- Woven overlay at collar & pockets
  - Sporty Vislon zipper with ergonomic puller
  - Elastic at sleeve cuff & bottom hem
  - Secure Front Zip Pockets
  - Locker Loop
  - CB logo trims
  - Recycled content certified by Global Recycled Standard
  - Uses average of 26 Post-consumer Recycled Plastic Bottles
- Available Ex Seattle Only - Please allow 3 Weeks for delivery to our warehouse

## COLOURS

### MEN'S



Black



Elemental Grey/  
Black



Navy Blue



Red/Navy Blue



Shell/Navy Blue

### LADIES



Black



Elemental Grey/  
Black



Hyacinth/Navy  
Blue



Navy Blue



Red/Navy  
Blue



Shell/Navy  
Blue

## SIZING AND FIT

MEN'S FIT		S	M	L	XL	XXL	3XL
CHEST (cm)		99	104	109	114	119	124
LADIES FIT	XS	S	M	L	XL	XXL	3XL
CHEST (cm)	86	90	95	101	109	116	120

\*These measurements represent body measurement, not garment measurement



MEN'S + LADIES CASCADE ECO SHERPA JACKET | MEN'S CODE MCO00070 | LADIES CODE LCO00055 |



## FEATURES

- Woven overlay at collar & shoulders
  - Sporty Vislon zipper with ergonomic puller
  - Elastic at sleeve cuff & bottom hem
  - Front Pockets, Chest Pocket on Men's
  - Locker Loop
  - CB logo trims
  - Recycled content certified by Global Recycled Standard
  - Uses average of 25 Post-consumer Recycled Plastic Bottles
- Available Ex Seattle Only - Please allow 3 weeks for delivery to our warehouse

## COLOURS

### MEN'S



Black



Elemental Grey/  
Black



Navy Blue



Red/Navy Blue



Shell/Navy Blue

### LADIES



Black



Elemental Grey/  
Black



Navy Blue



Red/Navy  
Blue



Shell/Navy  
Blue

## SIZING AND FIT

MEN'S FIT		S	M	L	XL	XXL	3XL	
CHEST (cm)		99	104	109	114	119	124	
LADIES FIT		XS	S	M	L	XL	XXL	3XL
CHEST (cm)		86	90	95	101	109	116	120

34 \*These measurements represent body measurement, not garment measurement

CATEGORY  
Overknit

FABRIC  
Body Fabric: 71% Recycled Polyester,  
29% Polyester Sherpa Fleece  
Trim Fabric: 100% Recycled Polyester Woven

WEIGHT  
Men's - 498 grams  
Ladies - 399 grams

UPF RATING  
N/A

RRP  
\$165



| MEN'S CODE MCO00047 | LADIES CODE LCO00058 |

MEN'S + LADIES MAINSAIL VEST



CATEGORY  
Outerwear

FABRIC  
100% Polyester

WEIGHT  
Men's - 326 grams  
Ladies - 326 grams

UPF RATING  
N/A

RRP  
\$170

## FEATURES

- 100% Polyester knit sweater fleece with heather yarn
  - Satin cover stitch seaming
  - Front welt pockets with zip closure
  - Tonal stretch binding at armhole, bottom hem and collar edge
  - CB Pennant embroidery at back collar
  - Asymmetrical front full zip or Straight zip available in Ladies
- Ladies Asymmetrical Vest - LCO00034  
Available Ex-Seattle Only - Please allow 3 weeks for delivery to our warehouse.

## COLOURS

### MEN'S



Bordeaux  
Heather



Cardinal Red  
Heather



Charcoal  
Heather



College Purple  
Heather



Hunter  
Heather



Liberty Navy  
Heather



Polished  
Heather



Tour Blue  
Heather

### LADIES



Cardinal Red  
Heather



Charcoal  
Heather



Liberty Navy  
Heather



Polished  
Heather

### LADIES ASSYMETRICAL



Bordeaux  
Heather



Cardinal Red  
Heather



Charcoal  
Heather



College Purple  
Heather



Hunter  
Heather



Liberty Navy  
Heather



Polished  
Heather



Tour Blue  
Heather

## SIZING AND FIT

MEN'S FIT		S	M	L	XL	XXL	3XL
CHEST (cm)		99	104	109	114	119	124
LADIES FIT	XS	S	M	L	XL	XXL	3XL
CHEST (cm)	86	90	95	101	109	116	120

\*These measurements represent body measurement, not garment measurement



## LADIES MAINSAIL JACKET

| HOODED CODE LCO00035 | JACKET CODE LCO00059 |



### FEATURES

- Available with and without a hood
  - 100% Polyester knit sweater fleece with heather yarn
  - Satin cover stitch seaming
  - Front welt pockets with zip closure
  - Tonal stretch binding at sleeve & bottom hem
  - CB Pennant embroidery at left sleeve
  - Sleeve thumbholes on Jacket
- Available Ex-Seattle Only - Allow 3 Weeks for delivery to our warehouse

### COLOURS

#### JACKET



Cardinal Red



Charcoal Heather



Liberty Navy



Polished Heather

#### HOODIE



Bordeaux Heather



Cardinal Red



Charcoal Heather



College Purple



Hunter Heather



Liberty Navy Heather



Polished Heather



Tour Blue Heather

### SIZING AND FIT

LADIES FIT	XS	S	M	L	XL	XXL	3XL
CHEST (cm)	86	90	95	101	109	116	120

CATEGORY  
Outerwear

FABRIC  
100% Polyester

WEIGHT  
426 grams

UPF RATING  
N/A

RRP  
\$195



| MEN'S FULL ZIP MCO00050 |

MEN'S HALF ZIP MCO00049 |

MEN'S MAINSAIL JACKET



CATEGORY  
Outerwear

FABRIC  
100% Polyester

WEIGHT  
Men's - 426 grams

UPF RATING  
N/A

**RRP**  
Half Zip: \$190  
Full Zip: \$195  
Hooded Full Zip: \$195

## FEATURES

- Half Zip, Full Zip and Hooded Full Zip available
- 100% Polyester knit sweater fleece with heather yarn
- Right zip chest pocket on the Men's
- Satin cover stitch seaming
- Tonal stretch binding at sleeve & bottom hem
- Front welt pockets with zip closure on Full Zip Jacket
- CB Pennant embroidery at back collar

Hooded Full Zip - MCO00089

Available Ex-Seattle Only - Please allow 3 weeks for delivery to our warehouse.

## COLOURS

### MEN'S HALF ZIP



### MEN'S FULL ZIP



### MEN'S HOODED FULL ZIP



## SIZING AND FIT

MEN'S FIT	S	M	L	XL	XXL	3XL
CHEST (cm)	99	104	109	114	119	124

\*These measurements represent body measurement, not garment measurement



## MEN'S + LADIES ECO RAINIER VEST

| MEN'S CODE MCO00019 | LADIES CODE LCO00008 |



### FEATURES

- Wind and Water Resistant
- Primaloft® Silver insulation made from 70% recycled polyester
- Contains an average of 3 recycled plastic bottles
- Packable Inside Left Pocket
- Mock Neck
- Elastic Bound Armholes and Bottom Hem
- Zipper in Lining for Embroidery Access

### COLOURS

#### MEN'S



#### LADIES



### SIZING AND FIT

MEN'S FIT		S	M	L	XL	XXL	3XL	
CHEST (cm)		99	104	109	114	119	124	
LADIES FIT		XS	S	M	L	XL	XXL	3XL
CHEST (cm)		86	90	95	101	109	116	120

CATEGORY  
Outerwear

FABRIC  
100% Nylon  
Primaloft Fill - 70% Recycled Polyester

WEIGHT  
Men's - 272 grams  
Ladies - 244 grams

UPF RATING  
N/A

RRP  
\$195





MEN'S CODE MCO00018 | LADIES CODE LCO00007 |

MEN'S + LADIES ECO RAINIER JACKET



CATEGORY  
Outerwear

FABRIC  
100% Nylon  
Primaloft Fill - 70% Recycled Polyester

WEIGHT  
Men's - 399 grams  
Ladies - 362 grams

UPF RATING  
N/A

RRP  
\$220

## FEATURES

- Wind and Water Resistant
- Primaloft® Silver Insulation made from 70% recycled polyester
- Contains an average of 5 recycled plastic bottles
- Packable Inside Left Pocket
- Mock Neck with Concealed Hood
- Elastic Bound Cuff and Bottom Hem
- Zipper in Lining for Embroidery Access

## COLOURS

### MEN'S



Anthracite  
Melange



Black



Dark Navy



Hunter  
Melange



Navy/Silver



Polished

### LADIES



Anthracite  
Melange



Black



Dark Navy



Hunter  
Melange



Hyacinth  
Melange



Navy/Silver



Polished

## SIZING AND FIT

### MEN'S FIT

CHEST (cm)

S	M	L	XL	XXL	3XL
99	104	109	114	119	124

### LADIES FIT

CHEST (cm)

XS	S	M	L	XL	XXL	3XL
86	90	95	101	109	116	120

\*These measurements represent body measurement, not garment measurement



MEN'S + LADIES ECO PRINTED RAINIER VEST

| MEN'S CODE MCO00069 | LADIES CODE LCO00054 |



## FEATURES

- Camo Print
- Wind and Water Resistant
- Primaloft® Silver insulation made from 70% recycled polyester
- Contains an average of 3 recycled plastic bottles
- Packable Inside Left Pocket
- Mock Neck
- Elastic Bound Armholes and Bottom Hem
- Zipper in Lining for Embroidery Access

## COLOURS

### MEN'S



Black



Dark Navy

### LADIES



Black



Dark Navy

## SIZING AND FIT

MEN'S FIT		S	M	L	XL	XXL	3XL	
CHEST (cm)		99	104	109	114	119	124	
LADIES FIT		XS	S	M	L	XL	XXL	3XL
CHEST (cm)		86	90	95	101	109	116	120

40 \*These measurements represent body measurement, not garment measurement

CATEGORY  
Outerwear

FABRIC  
100% Nylon  
Primaloft Fill - 70% Recycled Polyester

WEIGHT  
Men's - 272 grams  
Ladies - 244 grams

UPF RATING  
N/A

RRP  
\$195





| MEN'S CODE MCO00068 | LADIES CODE LCO00053 | **MEN'S + LADIES ECO PRINTED RAINIER JACKET**



CATEGORY  
Outerwear

FABRIC  
100% Nylon  
Primaloft Fill - 70% Recycled Polyester

WEIGHT  
Men's - 399 grams  
Ladies - 362 grams

UPF RATING  
N/A

**RRP**  
**\$220**

## FEATURES

- Camo Print
- Wind and Water Resistant
- Primaloft® Silver Insulation made from 70% recycled Polyester
- Contains an average of 5 recycled plastic bottles
- Packable Inside Left Pocket
- Mock Neck with Concealed Hood
- Elastic Bound Cuff and Bottom Hem
- Zipper in Lining for Embroidery Access

## COLOURS

### MEN'S



Black



Dark Navy

### LADIES



Black



Dark Navy

## SIZING AND FIT

MEN'S FIT		S	M	L	XL	XXL	3XL	
CHEST (cm)		99	104	109	114	119	124	
LADIES FIT		XS	S	M	L	XL	XXL	3XL
CHEST (cm)		86	90	95	101	109	116	120

\*These measurements represent body measurement, not garment measurement



## MEN'S + LADIES VAPOR RAIN JACKET

| MEN'S CODE MCO00058 | LADIES CODE LCO00041 |



### FEATURES

- 3 Layer Lamine Fabric
- Matte fabric finish
- Critically Taped Seams
- Durable Water Repellent Finish
- Water & Wind Resistant
- Concealed Hood
- Adjustable Snap Cuff

Available Ex-Seattle Only - Please allow 3 weeks for delivery to our warehouse

### COLOURS

#### MEN'S



Chelan



Concrete



Douglas



Obsidian  
\*Available  
Onshore

#### LADIES



Chelan



Concrete



Douglas



Obsidian  
\*Available  
Onshore

### SIZING AND FIT

#### MEN'S FIT

CHEST (cm)

S	M	L	XL	XXL	3XL
99	104	109	114	119	124

#### LADIES FIT

CHEST (cm)

XS	S	M	L	XL	XXL	3XL
86	90	95	101	109	116	120

CATEGORY  
Outerwear

FABRIC  
90% Polyester  
10% Spandex

WEIGHT  
Men's - 435 grams  
Ladies - 417 grams

UPF RATING  
N/A

RRP  
\$285





| MEN'S CODE MCO00083 | LADIES CODE LCO00068 |

MEN'S + LADIES CHARTER ECO VEST



CATEGORY  
Outerwear

FABRIC  
100% Recycled Polyester with  
DWR water resistant finish

WEIGHT  
Men's - 382 grams  
Ladies - 365 grams

UPF RATING  
N/A

RRP  
\$115

## FEATURES

- Water Resistant Finish
- Material made from an average of 24 recycled plastic bottles
- Packable and travel friendly with wrinkle release material
- Stowable hood for extra weather protection
- Adjustable elastic drawcord at hem
- CB logo trims and locker loop
- Recycled content certified by Global Recycled Standard
- Machine wash

Available Ex-Seattle Only - Please allow 3 weeks for delivery to our warehouse.

## COLOURS

### MEN'S



Black



Navy Blue



Polished

### LADIES



Black



Navy Blue



Polished

## SIZING AND FIT

MEN'S FIT		S	M	L	XL	XXL	3XL	
CHEST (cm)		99	104	109	114	119	124	
LADIES FIT		XS	S	M	L	XL	XXL	3XL
CHEST (cm)		86	90	95	101	109	116	120

\*These measurements represent body measurement, not garment measurement



MEN'S + LADIES CHARTER ECO ANORAK

| MEN'S CODE MCO00074 | LADIES CODE LCO00062 |



## FEATURES

- Water Resistant Finish
  - Material made from an average of 24 recycled plastic bottles
  - Packable and travel friendly with wrinkle release material
  - Fixed hood on Men's, Stowable hood on Ladies
  - Attached packable pouch
  - Adjustable elastic drawcord at hem
  - CB logo trims and locker loop
  - Men's has a zip opening at side seam for ventilation and easy entry/exit
  - Machine wash
- Available Ex-Seattle Only - Please allow 3 weeks for delivery to our warehouse.

## COLOURS

### MEN'S



Black

Black /  
Polished  
\*Available  
Onshore

Navy Blue

Navy Blue /  
Polished  
\*Available  
Onshore

Polished

Red / Polished

Tour Blue /  
Polished  
\*Available  
Onshore

### LADIES



Black

Black /  
Polished

Navy Blue

Navy Blue /  
Polished

Polished

Red / Polished

Tour Blue /  
Polished

## SIZING AND FIT

### MEN'S FIT

CHEST (cm)

S M L XL XXL 3XL

99 104 109 114 119 124

### LADIES FIT

CHEST (cm)

XS S M L XL XXL 3XL

86 90 95 101 109 116 120

CATEGORY  
Outerwear

FABRIC  
100% Recycled Polyester with  
DWR water resistant finish

WEIGHT  
Men's - 435 grams  
Ladies - 425 grams

UPF RATING  
N/A

RRP  
\$140





| MEN'S CODE MCO00073 | LADIES CODE LCO00061 | **MEN'S + LADIES CHARTER ECO FULL ZIP JACKET**



CATEGORY  
Outerwear

FABRIC  
100% Recycled Polyester with  
DWR water resistant finish

WEIGHT  
Men's - 444 grams  
Ladies - 408 grams

UPF RATING  
N/A

**RRP**  
**\$140**

## FEATURES

- Water Resistant Finish
- Material made from an average of 24 recycled plastic bottles
- Packable and travel friendly with wrinkle release material
- Stowable hood in collar for extra weather protection
- Attached packable pouch
- Adjustable elastic drawcord at hem
- CB logo trims and locker loop
- Machine wash

Available Ex-Seattle Only - Please allow 3 weeks for delivery to our warehouse  
More colours available Ex-Seattle. Please contact us for more information

## COLOURS

### MEN'S



Black  
\*Available Onshore



Navy Blue  
\*Available Onshore



Polished



Red  
\*Available Onshore



Tour Blue  
\*Available Onshore

### LADIES



Black



Navy Blue



Polished



Red



Tour Blue

## SIZING AND FIT

MEN'S FIT		S	M	L	XL	XXL	3XL	
CHEST (cm)		99	104	109	114	119	124	
LADIES FIT		XS	S	M	L	XL	XXL	3XL
CHEST (cm)		86	90	95	101	109	116	120

\*These measurements represent body measurement, not garment measurement



MEN'S + LADIES EVOKE ECO HYBRID VEST

| MEN'S CODE MCO00076 | LADIES CODE LCO00065 |



## FEATURES

- Bonded Honeycomb Softshell with DWR water resistant finish
- Recycled PrimaLoft insulation at front & back panels
- Fleece interior with performance rating: 3000K Water Proof / 6000K Breathability
- Material made from an average of 20 recycled plastic bottles
- Secure Zip Pockets
- Recycled content certified by Global Recycled Standard
- CB logo trims and locker loop
- Machine wash

Available Ex-Seattle Only - Please allow 3 weeks for delivery to our warehouse

## COLOURS

### MEN'S



Black



Concrete



Elemental Grey



Navy Blue



Tour Blue

### LADIES



Black



Concrete



Elemental Grey



Navy Blue



Tour Blue

## SIZING AND FIT

### MEN'S FIT

CHEST (cm)

S	M	L	XL	XXL	3XL
99	104	109	114	119	124

### LADIES FIT

CHEST (cm)

XS	S	M	L	XL	XXL	3XL
86	90	95	101	109	116	120

CATEGORY  
Outerwear

### FABRIC

100% Recycled Polyester Bonded Honeycomb Softshell  
100% Polyester Recycled PrimaLoft insulation

### WEIGHT

Men's - 426 grams  
Ladies - 335 grams

### UPF RATING

N/A

RRP  
\$190





MEN'S CODE MCO00077 | LADIES CODE LCO00064 |

MEN'S + LADIES EVOKE ECO HYBRID JACKET



CATEGORY  
Outerwear

FABRIC  
100% Recycled Polyester Bonded Honeycomb  
Softshell  
100% Polyester Recycled Primaloft insulation

WEIGHT  
Men's - 635 grams  
Ladies - 444 grams

UPF RATING  
N/A

RRP  
\$210

## FEATURES

- Bonded Honeycomb Softshell with DWR water resistant finish
- Primaloft insulation at front & back panels
- Fleece interior with performance rating: 3000K Water Proof / 6000K Breathability
- Material made from an average of 25 recycled plastic bottles
- Secure Zip Pockets
- Recycled content certified by Global Recycled Standard
- CB logo trims and locker loop
- Machine wash

Available Ex-Seattle Only - Please allow 3 weeks for delivery to our warehouse

## COLOURS

### MEN'S



Black



Concrete



Elemental  
Grey



Navy Blue



Tour Blue

### LADIES



Black



Concrete



Elemental Grey



Navy Blue



Tour Blue

## SIZING AND FIT

MEN'S FIT		S	M	L	XL	XXL	3XL	
CHEST (cm)		99	104	109	114	119	124	
LADIES FIT		XS	S	M	L	XL	XXL	3XL
CHEST (cm)		86	90	95	101	109	116	120

\*These measurements represent body measurement, not garment measurement



MEN'S + LADIES EVOKE ECO SOFTSHELL JACKET | MEN'S CODE MCO00078 | LADIES CODE LCO00066 |



## FEATURES

- Bonded Honeycomb Softshell with DWR water resistant finish
- Fleece interior with performance rating: 3000K Water Proof / 6000K Breathability
- Material made from an average of 20 recycled plastic bottles
- Hood on Ladies
- Secure Zip Pockets
- Recycled content certified by Global Recycled Standard
- CB logo trims and locker loop
- Machine wash

Available Ex-Seattle Only - Please allow 3 weeks for delivery to our warehouse

## COLOURS

### MEN'S



Black



Cardinal Red



Concrete



Elemental Grey



Navy Blue



Tour Blue

### LADIES



Black



Cardinal Red



Concrete



Elemental Grey



Navy Blue



Tour Blue

## SIZING AND FIT

### MEN'S FIT

CHEST (cm)

S	M	L	XL	XXL	3XL
99	104	109	114	119	124

### LADIES FIT

CHEST (cm)

XS	S	M	L	XL	XXL	3XL
86	90	95	101	109	116	120

CATEGORY  
Outerwear

FABRIC  
100% Recycled Polyester Bonded Honeycomb Softshell

WEIGHT  
Men's - 553 grams  
Ladies - 480 grams

UPF RATING  
N/A

RRP  
\$200





MEN'S CODE MCO00067 | LADIES CODE LCO00052 |

MEN'S + LADIES MISSION RIDGE JACKET



CATEGORY  
Outerwear

FABRIC  
Body Fabric: 100% Recycled Polyester Channel Interlock  
Fill: Repreve Eco Insulation made from 100% Recycled Polyester

WEIGHT  
Men's - 861 grams  
Ladies - 734 grams

UPF RATING  
N/A

RRP  
\$300

## FEATURES

- Warm, Water-resistant & Breathable
  - Temperature rated at -17.7 to 7.2 degrees C
  - Fully insulated hood with drawcord for secure fit
  - Water-resistant zippers at front closure & pockets
  - Elastic at sleeve cuff
  - CB logo trims
  - Recycled content certified by Global Recycled Standard
  - Uses average of 55 Post-consumer Recycled Plastic Bottles
- Available Ex-Seattle Only - Please allow 3 weeks for delivery to our warehouse.

## COLOURS

### MEN'S



Black



Douglas



Navy Blue

### LADIES



Black



Douglas



Navy Blue

## SIZING AND FIT

MEN'S FIT		S	M	L	XL	XXL	3XL	
CHEST (cm)		99	104	109	114	119	124	
LADIES FIT		XS	S	M	L	XL	XXL	3XL
CHEST (cm)		86	90	95	101	109	116	120

\*These measurements represent body measurement, not garment measurement



MEN'S + LADIES TELEMAR SOFTSHELL

MEN'S CODE

MQ000055

LADIES CODE

LQ000041



## FEATURES

- High Performance Softshell
- Waterproof to 1,000mm
- Mock Neck
- Microfleece Lining
- Velcro Closure Cuffs

Available Ex-Seattle Only - Please allow 3 weeks for delivery to our warehouse.

## COLOURS

### MEN'S



Apple Green



Black  
\*Available  
Onshore



Dark Navy  
\*Available  
Onshore



Pistol



Red



Royal Blue

### LADIES



Apple Green



Black  
\*Available  
Onshore



Dark Navy  
\*Available  
Onshore



Pistol



Red



Royal Blue

## SIZING AND FIT

MEN'S FIT		S	M	L	XL	X XL	3 XL
CHEST (cm)		99	104	109	114	119	124
LADIES FIT	XS	S	M	L	XL	XXL	3XL
CHEST (cm)	86	90	95	101	109	116	120

CATEGORY  
Outerwear

FABRIC  
96% Polyester  
4% Spandex

WEIGHT  
Men's - 625 grams  
Ladies - 526 grams

UPF RATING  
N/A

RRP  
\$115



MEN'S CODE MQO00056 | LADIES CODE LQO00042 | **MEN'S + LADIES NARVIK COLOURBLOCK SOFTSHELL**



CATEGORY  
Outerwear

FABRIC  
96% Polyester  
4% Spandex

WEIGHT  
Men's - 625 grams  
Ladies - 526 grams

UPF RATING  
50+

RRP  
\$115

## FEATURES

- Microfleece Lined Colourblock Softshell
  - Waterproof to 1,000mm
  - Reverse Coil Zipper at Front Center & Along Side Pockets
  - Elasticized Cuffs
  - Angled Zip Chest Pocket
  - Locker Loop
- Available Ex-Seattle Only - Please allow 3 weeks for delivery to our warehouse.

## COLOURS

### MEN'S



Black/Black



Dark Navy/Black



Pistol/Black



Red/Black

### LADIES



Black/Black



Dark Navy/Black



Pistol/Black



Red/Black

## SIZING AND FIT

MEN'S FIT		S	M	L	XL	XXL	3XL	
CHEST (cm)		99	104	109	114	119	124	
LADIES FIT		XS	S	M	L	XL	XXL	3XL
CHEST (cm)		86	90	95	101	109	116	120

\*These measurements represent body measurement, not garment measurement



## MEN'S + LADIES EQUINOX SOFTSHELL VEST

| MEN'S CODE MQO00074 | LADIES CODE LQO00059 |



### FEATURES

- Vest silhouette provides versatile layering and core warmth
  - Bonded Softshell with DWR water resistant finish
  - Insulated lining for optimal cold weather protection
  - Ample pockets to secure all your essentials
  - Machine Wash
- Available Ex-Seattle Only - Please allow 3 weeks for delivery to our warehouse.

### COLOURS

#### MEN'S



Black



Bottle Green



Dark Navy



Pure Slate



Red



Royal Blue

#### LADIES



Black



Bottle Green



Dark Navy



Pure Slate



Red



Royal Blue

### SIZING AND FIT

MEN'S FIT		S	M	L	XL	XXL	3XL	
CHEST (cm)		99	104	109	114	119	124	
LADIES FIT		XS	S	M	L	XL	XXL	3XL
CHEST (cm)		86	90	95	101	109	116	120

52 \*These measurements represent body measurement, not garment measurement

CATEGORY  
Outerwear

FABRIC  
85% Polyester  
15% Spandex

WEIGHT  
Men's - 562 grams  
Ladies - 462 grams

UPF RATING  
N/A

RRP  
\$110



| MEN'S CODE MQO00073 | LADIES CODE LQO00060 |

**MEN'S + LADIES EQUINOX SOFTSHELL JACKET**



CATEGORY  
Outerwear

FABRIC  
85% Polyester  
15% Spandex

WEIGHT  
Men's - 925 grams  
Ladies - 771 grams

UPF RATING  
N/A

**RRP**  
**\$125**

## FEATURES

- Cold weather rating -20 to 8 degrees Celsius
  - Bonded Softshell with DWR water resistant finish
  - Insulated lining for optimal cold weather protection
  - Contour hood with drawcord for snug fit
  - Ample pockets to secure all your essentials
  - Machine Wash
- Available Ex-Seattle Only - Please allow 3 weeks for delivery to our warehouse.

## COLOURS

### MEN'S



Black



Bottle  
Green



Dark Navy



Pure Slate



Red



Royal Blue

### LADIES



Black



Bottle  
Green



Dark Navy



Pure Slate



Red



Royal Blue

## SIZING AND FIT

MEN'S FIT  
CHEST (cm)

S	M	L	XL	XXL	3XL
99	104	109	114	119	124

LADIES FIT  
CHEST (cm)

XS	S	M	L	XL	XXL	3XL
86	90	95	101	109	116	120

\*These measurements represent body measurement, not garment measurement



## MEN'S + LADIES HUDSON PUFFER VEST

| MEN'S CODE MQ000069 | LADIES CODE LQ000056 |



### FEATURES

- Water Resistant
  - Quilted Shell
  - Lightweight
  - Zippered Front Pockets
  - Adjustable Drawcord Hem
- Available Ex-Seattle Only - Please allow 3 weeks for delivery to our warehouse

### COLOURS

#### MEN'S



Black



Dark Navy



Grey



Red



Royal Blue

#### LADIES



Black



Dark Navy



Grey



Red



Royal Blue

### SIZING AND FIT

MEN'S FIT		S	M	L	XL	XXL	3XL	
CHEST (cm)		99	104	109	114	119	124	
LADIES FIT		XS	S	M	L	XL	XXL	3XL
CHEST (cm)		86	90	95	101	109	116	120

CATEGORY  
Outerwear

FABRIC  
100% Polyester

WEIGHT  
Men's - 381 grams  
Ladies - 335 grams

UPF RATING  
N/A

RRP  
\$125



| MEN'S CODE MQO00060 | LADIES CODE LQO00048 |

MEN'S + LADIES HUDSON PUFFER JACKET



CATEGORY  
Outerwear

FABRIC  
100% Polyester

WEIGHT  
Men's - 634 grams  
Ladies - 508 grams

UPF RATING  
N/A

RRP  
\$150

## FEATURES

- Water Resistant Quilted Shell
- Removable Snap Hood
- Left Chest Pocket engineered for embroidery
- Zip Front Pockets
- Elastic Binding at Cuff
- Drawcord Hem

Available Ex-Seattle Only - Please allow 3 weeks for delivery to our warehouse

## COLOURS

### MEN'S



Black



Dark Navy



Grey



Red



Royal Blue

### LADIES



Black



Dark Navy



Grey



Red



Royal Blue

## SIZING AND FIT

MEN'S FIT		S	M	L	XL	XXL	3XL	
CHEST (cm)		99	104	109	114	119	124	
LADIES FIT		XS	S	M	L	XL	XXL	3XL
CHEST (cm)		86	90	95	101	109	116	120

\*These measurements represent body measurement, not garment measurement



## MEN'S + LADIES COLORADO JACKET

| MEN'S CODE MQ000072 | LADIES CODE LQ000058 |



### FEATURES

- Insulated Water Resistant Fabric
- Waterproof Chest and Front Zippers
- Temperature rated at -23.3 to 5.5 degrees C
- Adjustable and Detachable Hood
- TPU Waterproof Coating
- Rib Cuff in Sleeve
- Internal Drawstring

Available Ex-Seattle Only - Please allow 3 weeks for delivery to our warehouse

### COLOURS

#### MEN'S



Black



Dark Navy

#### LADIES



Black



Dark Navy

### SIZING AND FIT

MEN'S FIT		S	M	L	XL	XXL	3XL	
CHEST (cm)		99	104	109	114	119	124	
LADIES FIT		X5	S	M	L	XL	XXL	3XL
CHEST (cm)		86	90	95	101	109	116	120

CATEGORY  
Outerwear

FABRIC  
100% Polyester

WEIGHT  
Men's - 1297 grams  
Ladies - 1061 grams

UPF RATING  
N/A

RRP  
\$230



| SKORT CODE LCB00001 | SHORT CODE LCB07135 |

LADIES PACIFIC SKORT AND SHORT



CATEGORY  
Ladies Bottoms

FABRIC  
86% Polyester  
14% Spandex

WEIGHT  
Skort - 326 grams  
Short - 308 grams

UPF RATING  
50+

RRP  
\$135

## FEATURES

- Solid Stretch Twill
  - Moisture Wicking
  - Pull on Waistband
  - Front Onseam Invisible Zipper Pockets
  - Back Piecing with Onseam Invisible Zipper Pocket
  - CB Pennant at Hem
- Skort - Outseam Skort 18", Inseam Undershirt 4"  
Short - Inseam 10"

## COLOURS

### SKORT



Black



Castle



Liberty  
Navy



White

### SHORT



Black



Liberty  
Navy



White

## SIZING AND FIT

LADIES FIT	XS	S	M	L	XL	XXL
WAIST (cm)	66	68 - 71	73 - 76	80 - 83	87 - 92	96.5

\*These measurements represent body measurement, not garment measurement



MEN'S + LADIES ALL AROUND 5 POCKET PANT

| MEN'S CODE MQB00002 | LADIES CODE LQB00004 |



## FEATURES

- 5 Pockets
- Zipper with Bottom Front Fly Closure
- Twill Pant

Available Ex Seattle Only. Please allow 3 weeks for delivery to our warehouse.

## COLOURS

### MEN'S



Black

Dark Navy

Khaki

Pistol

### LADIES



Black

Dark Navy

Khaki

Pistol

## SIZING AND FIT

### MEN'S FIT

30-42 waist x 32" inseam

LADIES FIT	US 2	US 4	US 6	US 8	US 10	US 12	US 14	US 16
WAIST (cm)	66	68	71	73	76	80	83	87

CATEGORY  
Bottoms

FABRIC  
98% Cotton Twill  
2% Spandex

WEIGHT  
Men's - 489 grams  
Ladies - 435 grams

UPF RATING  
N/A

RRP  
\$100



| PANT CODE MCB00018 | SHORT CODE MCB00093 |

BAINBRIDGE SPORT PANT AND SHORT



CATEGORY  
Men's Bottoms

FABRIC  
88% Polyester  
12% Spandex

WEIGHT  
Pants - 362 grams  
Shorts - 263 grams

UPF RATING  
50+

**RRP**  
Pants - \$145  
Shorts - \$125

## FEATURES

- Moisture Wicking Stretch Dobby
- Curved Waistband
- Welded Belt Loops and Fly with Front Snap Closure
- Front Slant Pockets
- Back Left Single Welt Pocket, Back Right Welded Zipper Pocket
- Clean Finished Hem
- CB Pennant Printed Above Back Pocket

## COLOURS

### PANTS



Black



Castle



Iron



Navy Blue

### SHORTS



Black



Castle



Iron



Navy Blue

## SIZING AND FIT

Pants - 30-42 waist x 32" inseam  
Shorts - 30-42 waist x 9" inseam

\*These measurements represent body measurement, not garment measurement



## STOCKHOLM SWEATPANT

CODE MQB00003



### FEATURES

- Unisex Sweatpant
- Prewashed fabric is soft and stabilized for easy wash and wear
- Side pockets
- Elastic Waistband with Drawstring
- Anti Pill Finish
- Elastic Leg Cuff

### COLOURS



Anthracite  
Melange



Black



Dark Navy



Grey  
Melange

CATEGORY  
Bottoms

FABRIC  
65% Polyester  
35% Cotton

WEIGHT  
208 grams

UPF RATING  
N/A

RRP  
\$65

### SIZING AND FIT

FIT	S	M	L	XL	XXL	3XL
CHEST (cm)	99	104	109	114	119	124





| MEN'S CODE MQB00004 |

MEN'S LIFT PERFORMANCE SWEATPANT



CATEGORY  
Men's Bottoms

FABRIC  
100% Polyester  
Interlock

WEIGHT  
Men's - 517 grams

UPF RATING  
N/A

RRP  
\$65

## FEATURES

- Drawstring Wasit-Tie
- Zippered Pockets
- Elastic at the Waist and Bottom of Leg
- Spin Dye Technology
- Eco Friendly Production

## COLOURS

MEN'S



Black



Grey  
Melange



Navy

## SIZING AND FIT

MEN'S FIT	S	M	L	XL	XXL	3XL
CHEST (cm)	99	104	109	114	119	124

\*These measurements represent body measurement, not garment measurement

## C91N The Nicklaus Bucket Hat

CLASSIC CUT • CHINO TWILL • SEMI STRUCTURED

Size: M  
L  
XL



Available Colours:



## C70P The Palmer Hat

CLASSIC CUT • TACTEL • UNSTRUCTURED

Size: M  
XL



Available Colours:



## C76R The Skipper Bucket Hat

CLASSIC CUT • WASHED TWILL • UNSTRUCTURED

Size: S/M  
L/XL



Available Colours:



## S83P Straw Hat Fedora 2-Tone

TRADITIONAL CUT • STRAW HAT MATERIAL • CLOTH BAND

Size: M  
L  
XL



Available Colours:



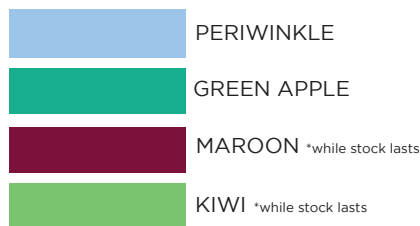
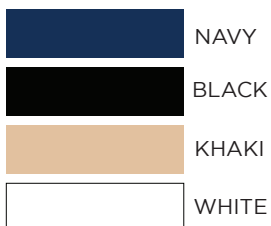
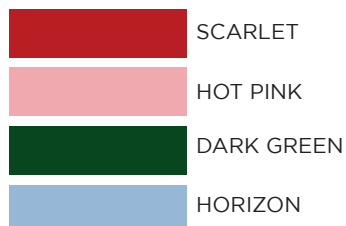
## S81P Straw Hat Gambler

TRADITIONAL CUT • STRAW HAT MATERIAL • CLOTH BAND

Size: M  
L  
XL



Available Colourways for Flat Bands:



\*Head wear does NOT come with ornamentation



## C47LGT Lightweight Solid Cap

CLASSIC CUT • LIGHT WEIGHT COTTON • UNCONSTRUCTED •  
VELCRO TAB  
Size: One-Size fits most



### Available Colours:

	BLACK
	WHITE
	KHAKI
	NAVY
	GRAPHITE
	CRIMSON
	UNIVERSITY CAROLINA BLUE
	NEW MELON
	CARBON
	GEORGIA GREEN *While Stocks Last
	ROYAL *While Stocks Last

## M27EP1 Smooth Lightweight Tech Cap

MID FIT • SMOOTH LIGHTWEIGHT FABRIC • UNSTRUCTURED •  
VELCRO TAB  
Size: One-Size fits most



### Available Colours:

	LIGHT GREY
	NAVY
	BLACK
	GRAPHITE
	KHAKI
	STONE
	WHITE
	UNIVERSITY CARDINAL *While Stocks last.
	GEORGIA GREEN *While Stocks last.
	MINERAL
	ORANGESICLE *Limited Edition

## E47MT2 Extreme Solid Cap

EXTREME FIT • VINTAGE TWILL • UNSTRUCTURED • VELCRO  
TAB • LOOP GRAB  
Size: One-Size fits most



### Available Colours:

	UNIV. BORDEAUX		BLACK
	DEEP RED		GREYSTONE
	ORANGE		KHAKI
	KELLY		BONE
	DK. GREEN		TRUE WHITE
	U. CAR. BLUE		VEGAS GOLD *Limited Edition
	U. TOUR BLUE		
	NAVY		
	HOT PINK		

\*Colours may vary - digital representation only

## C47MT2 Vintage Solid Cap

CLASSIC CUT • VINTAGE TWILL • UNSTRUCTURED • METAL GRAB

Size: One-Size fits most



### Available Colours:



## M15CHR Structured Heather Solid Cap

MID FIT • STRUCTURED • POLY HEATHER • VELCRO TAB

Size: One-Size fits most



### Available Colours:



## C47LAR Largo Cap

CLASSIC RELAXED FIT • WASHED TWILL • UNSTRUCTURED • ADJUSTABLE CLOTH STRAP • SNAP BUCKLE

Size: One-Size fits most



### Available Colours:



## K90SWC Newfoundland Beanie

ACRYLIC KNIT SHELL WITH CUFF • FLEECE LINING

Size: One-Size fits most



### Available Colours:



## LIMITED EDITION PRINTED CAPS

### M14PSM Salem Cap

MID FIT • MICROFIBRE FRONT • NYLON MESH BACK • STRUCTURED • SNAP CLOSURE • SUBLIMATION PRINTED

Size: One-Size fits most



### Available Colours:



### M16PF1 Aloha Cap

MID FIT • MICROFIBER FRONT • SPHERE FABRIC BACK • STRUCTURED • SNAP CLOSURE • SUBLIMATION PRINTED

Size: One-Size fits most



### Available Colours:

PINEAPPLE FLORAL/  
WHITE

### M17TPM Kahuna Cap

MID FIT • STRUCTURED • PRINTED COTTON FRONT • PLASTIC MESH BACK • SNAP CLOSURE

Size: One-Size fits most



### Available Colours:

Navy Tropical/Navy

### M47PLM Palms Cap

MID FIT • UNSTRUCTURED • PRINTED COTTON • FABRIC STRAP CLOSURE WITH METAL SLIDER

Size: One-Size fits most



### Available Colours:

Light Blue/Navy



# LIMITED EDITION PRINTED CAPS

## C14HBM Paradiso Cap

CLASSIC CUT • SUBLIMATION PRINT POLY • NYLON MESH BACK • STRUCTURED • SNAP CLOSURE  
Size: One-Size fits most

### Available Colours:

White Coral Hibiscus/  
White Mesh



## C16BRW Cerveza Cap

CLASSIC CUT • MICROFIBRE FRONT • NYLON MESH BACK • STRUCTURED • SNAP CLOSURE • SUBLIMATION PRINTED BEERS  
Size: One-Size fits most

### Available Colours:

Cerveza Print/White Mesh



## C16FSH Angler Cap

CLASSIC CUT • MICROFIBER FRONT • NYLON MESH BACK • STRUCTURED • SNAP CLOSURE • SUBLIMATION PRINTED LURES  
Size: One-Size fits most

### Available Colours:

Angler Print/White Mesh



## E68TN8 Textured Poly Visor

MID-RISE • TEXTURED POLY • VELCRO TAB • LOOP GRAB  
Size: One-Size fits most

### Available Colours:

	WHITE/COMET
	WHITE/BLACK
	WHITE/COBALT
	WHITE/LIME
	BLACK
	COBALT
	WHITE



## V62WT6 Big Brim Bungie Cord Visor

COMFORT BUNGIE CORD • OVERSIZED BRIM • CHINO TWILL  
Size: One-Size fits most

### Available Colours:

	DAISY
	BAHAMA
	LAVENDER
	HOT PINK
	BLACK
	NAVY
	BONE
	WHITE
	BUTTER
	RED
	IRIS
	BUBBLEGUM
	LIME



## ANNV6009 Ladies CB Ankle Socks

Size: One-Size fits most

### Available Colours:



WHITE/ LT BLUE



WHITE/ NAVY



WHITE/ RED



WHITE/ YELLOW

\*For custom offshore headwear, please contact our sales team or your local agent.

\*Colours may vary - digital representation only

# SIZE CHARTS AND BODY MEASUREMENTS

How to measure your body for size



## NECK

Measure around your neck at the point where a shirt collar band encircles the neck.

## CHEST

Place tape measure up under arms and measure the fullest part of the chest, keeping tape parallel to the floor.

## WAIST

Tape measure should be straight around waist where pant waistband normally sits.

## SLEEVE

With elbow bent, measure from the center of the back at the base of the neck, across the shoulder to the elbow and then down to the wrist.

## TAILORED FIT STYLES

Cut trimmer in the sleeves and body.

## Men's Size

SIZE	NECK	CHEST	WAIST	SLEEVE LENGTH
Small	15.5-16	36-38	31-32	32.5-33
Medium	16.5-17	39-41	33-35	33-33.5
Large	17-17.5	42-44	36-38	33.5-34
XL	18-18.5	45-48	39-43	34-34.5
2XL	18.5-19	49-52	44-48	34.5-35
3XL	19.5-20.5	53-56	49-53	35-36

## Big Size (6'3" & under)

SIZE	NECK	CHEST	WAIST	SLEEVE LENGTH
1XB	18-18.5	46-48	42-44	35
2XB	19-19.5	50-52	46-48	35
3XB	20	54-56	50-52	36
4XB	21	58-60	54-56	36
5XB	22	62-64	58-60	37

## Tall Size (6'4" & taller)

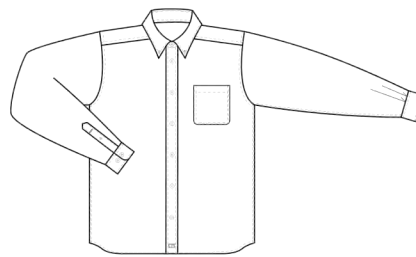
SIZE	NECK	CHEST	WAIST	SLEEVE LENGTH
LT	17-17.5	42-44	38-40	37
XLT	18-18.5	46-48	42-44	38
2XT	19-19.5	50-52	46-48	39
3XT	20	54-56	50-52	40

*These charts represent body measurements, not garment measurements.*

## FIND THE RIGHT FIT

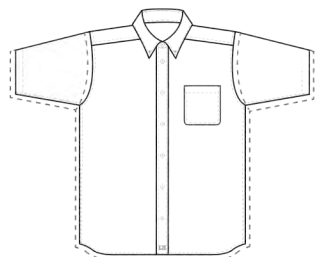
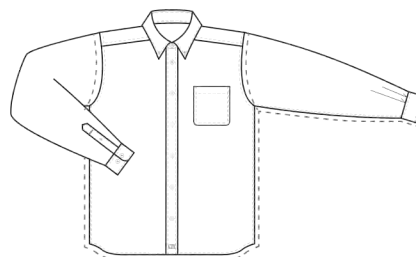
### REGULAR FIT

- The standard used in most of our shirts
- A perfect combo of style and comfort
- Gives you room to play and perform



### RELAXED FIT

- A roomier cut for comfort
- Larger in the chest and shoulder
- Longer sleeves and body length



### TAILORED FIT

- A slimmer look that emphasizes style
- Closer to the body in chest and shoulder
- Shorter sleeve and body lengths



### CLIQUE FIT

- Slightly longer sleeve and hem than C&B Regular Fit
- Slightly wider hem opening than C&B Regular Fit





# How to measure your body for size



- BUST**  
Place tape measure up under arms and measure the fullest part of the chest, keeping tape parallel to the floor.
- WAIST**  
Tape measure should be straight around waist where pant waistband normally sits.
- HIP**  
Standing with heels together, with tape parallel to the floor, measure the fullest part.
- SLEEVE**  
With elbow bent, measure from the center of the back at the base of the neck, across the shoulder to the elbow and then down to the wrist.

## Ladies' Size

SIZE	NUMERIC SIZE	BUST	WAIST	HIP
X-Small	2	34	26	36.5
Small	4-6	35-36	27-28	37.5-38.5
Medium	8-10	37-38	29-30	39.5-40.5
Large	12-14	39.5-41	31.5-33	42-43.5
XL	16-19	42.5-44.5	34.5-36.5	45-47
2XL	20	46	38	48.5
3XL	22	47.5	39.5	50
4XL	24	49	41	51.5

## Women's Plus Size

SIZE	NUMERIC SIZE	BUST	WAIST	HIP
1X	14-16	45-47	39-41	46-48
2X	18-20	48-50	42-44	49-51
3X	22-24	51-53	45-47	52-54
4X	26-28	54-56	48-50	55-57
5X	30-32	57-59	51-53	58-60

These charts represent body measurements, not garment measurements.

## FIND THE RIGHT FIT



- REGULAR FIT**
  - The standard used in most of our shirts
  - A perfect combo of style and comfort
  - Provides freedom to play and perform



- RELAXED FIT**
  - Slightly bigger cut for comfort
  - More room at the tummy
  - Slightly longer sleeves



- CLIQUE FIT**
  - Slightly longer and narrow opening at the waist then C&B Regular Fit



# CUTTER & BUCK



**SUPPLIER MEMBER**

Cutter & Buck Australia Pty Ltd  
10/1472 Boundary Road, Wacol, QLD 4076  
PO Box 221 Carole Park, QLD 4300  
Phone | 07 3906 3900 Fax | 07 3274 1630  
Email | [sales@cutterbuck.com.au](mailto:sales@cutterbuck.com.au)  
[www.cutterbuck.com.au](http://www.cutterbuck.com.au)

This document/advertisement contains confidential information and is the property of Cutter and Buck Inc. It is not to be used for any purpose other than the merchandising and corporate strategy. It is not to be reproduced or distributed for the sole use of Cutter and Buck Inc. and its authorized distributors. Any reproduction or distribution of this document without the prior written consent of Cutter and Buck Inc. is prohibited. Cutter and Buck Inc. © Cutter & Buck Inc. 2018. All rights reserved.